

Rampion 2 Wind Farm

Category 2: Plans

Offshore Order limits and grid co-ordinates plan

Date: August 2023

Revision A

Document Reference: 2.11

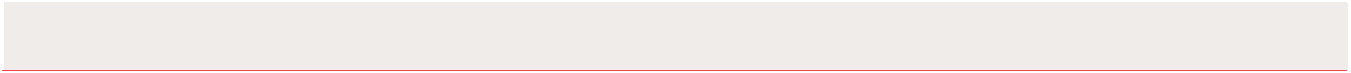
Pursuant to: APFP Regulation 5 (2) (i)

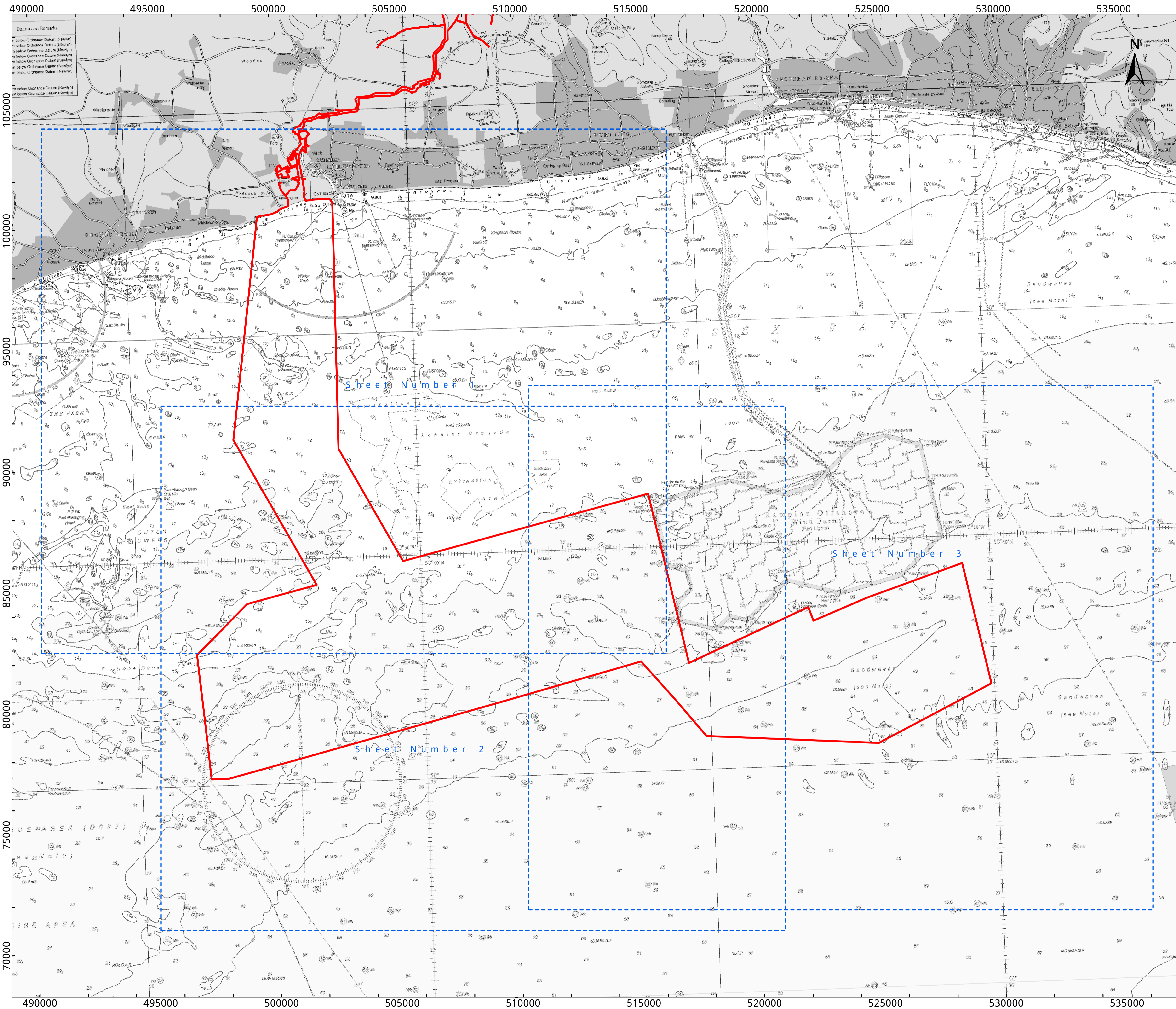
Ecodoc number: 004896086-01



Document revisions

Revision	Date	Status/reason for issue	Author	Checked by	Approved by
A	04/08/2023	Final for DCO Application	WSP	RED	RED

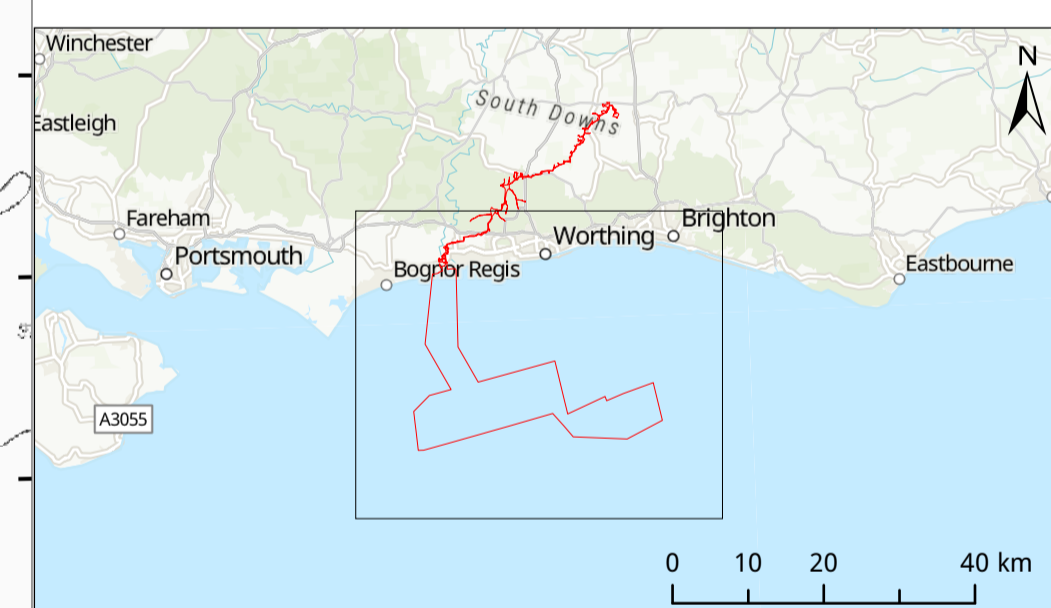




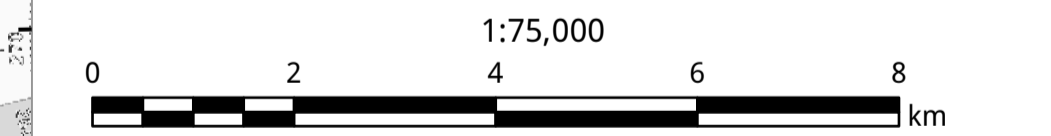
Key

- Development Consent Order Limits
- Map Index Page Extent

NOTES:
Offshore DOC Order Limits Coordinates are provided seaward from Mean High Water Springs



Due to scaling, some narrow areas (i.e. existing tracks) within the red line boundary may appear as a single/solid red line on the map.
Main map scale is 1:75,000 when printed at A1 (native page size)
Inset and key maps will vary.



WGS 1984 UTM Zone 30N Transverse Mercator
Rampion Extension Development Limited

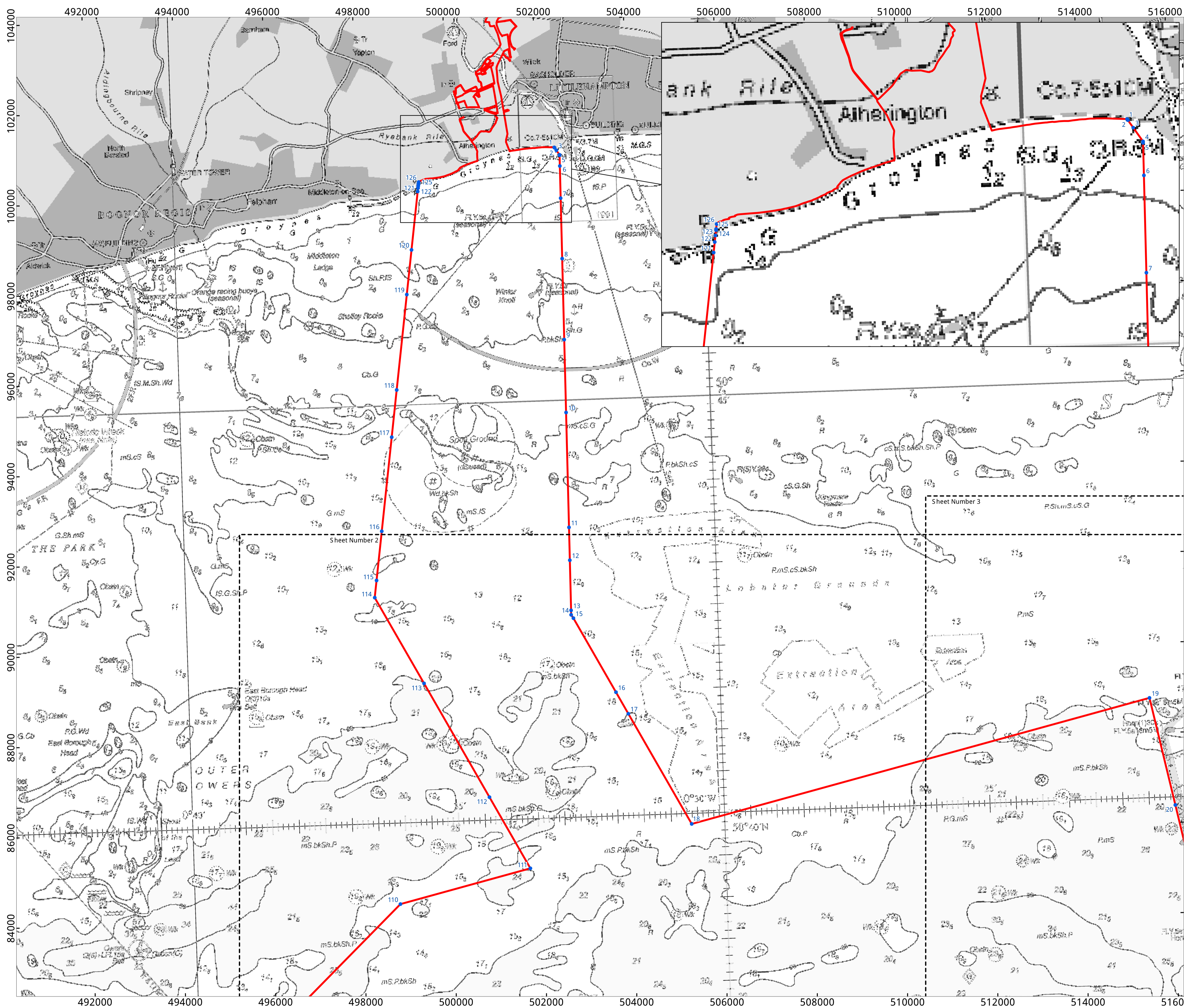


Rampion 2 Offshore Wind Farm
Offshore Order Limits and Grid Co-ordinates Plan
Map Index

APFP Regulations: Regulation 5(2)(i)
Application Document Reference: 2.11

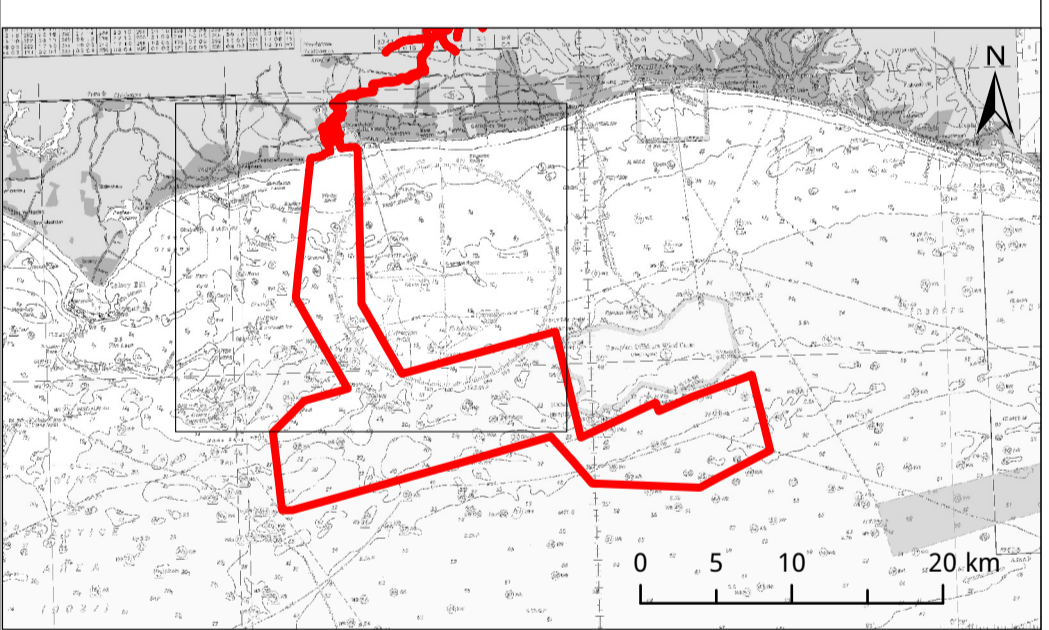
System Identifier: 004891763-01-RA2-DCO Offshore Order Limits				Version: 01
--	--	--	--	----------------

Company: RWE	Drawn By: LB	Chk/Aprvd: MM	Drawn Date: 21/07/2023	Status: FOR USE
-----------------	-----------------	------------------	---------------------------	--------------------



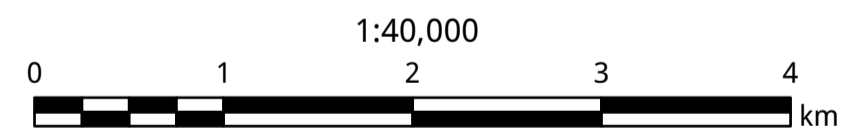
- Key**
- Development Consent Order Limits
 - Coordinates provided in DCO for Offshore Order Limits

NOTES:
Offshore DOC Order Limits Coordinates are provided seaward from Mean High Water Springs



Due to scaling, some narrow areas (i.e. existing tracks) within the red line boundary may appear as a single/solid red line on the map.

Main map scale is 1:40,000 when printed at A1 (native page size)
Inset and key maps will vary.



WGS 1984 UTM Zone 30N Transverse Mercator

Rampion Extension Development Limited

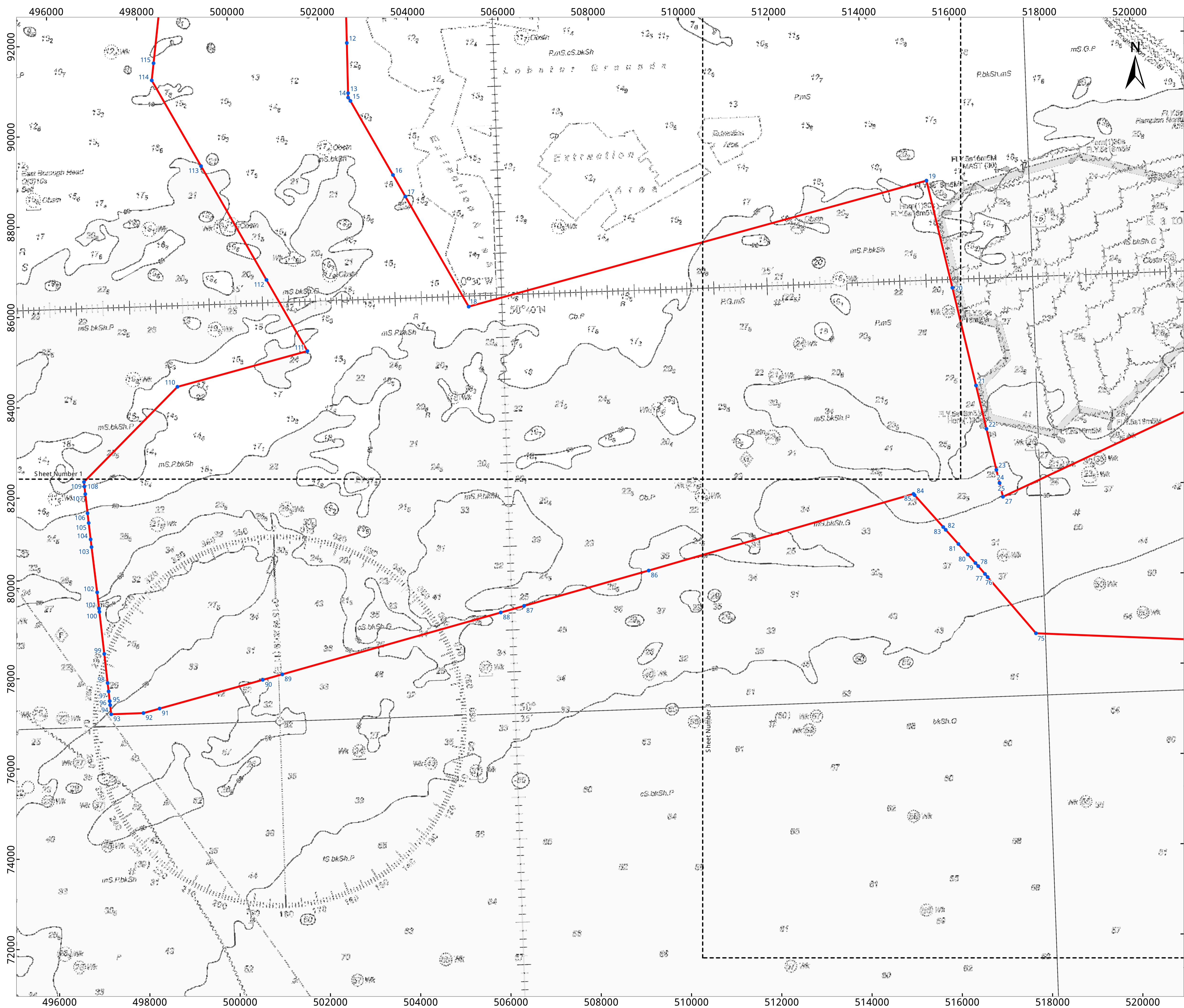


Rampion 2 Offshore Wind Farm
Offshore Order Limits and Grid Co-ordinates Plan
Sheet 1 of 3

APFP Regulations: Regulation 5(2)(i)
Application Document Reference: 2.11

System Identifier: 004891763-01-RA2-DCO Offshore Order Limits	Version: 01
--	----------------

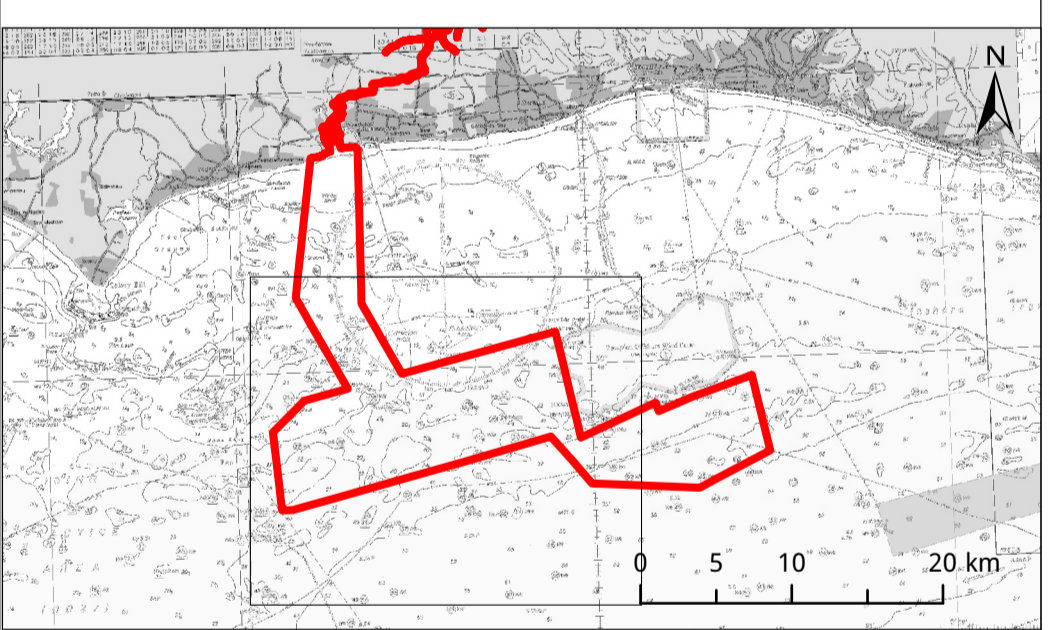
Company: RWE	Drawn By: LB	Chk/Aprvd: MM	Drawn Date: 03/08/2023	Status: FOR USE
-----------------	-----------------	------------------	---------------------------	--------------------



- Key**
- Development Consent Order Limits
 - Coordinates provided in DCO for Offshore Order Limits

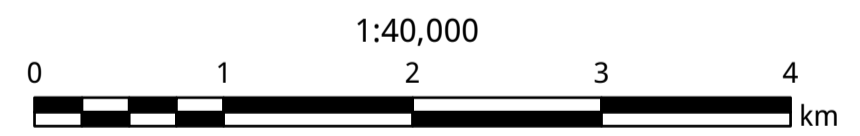


NOTES:
Offshore DOC Order Limits Coordinates are provided seaward from Mean High Water Springs



Due to scaling, some narrow areas (i.e. existing tracks) within the red line boundary may appear as a single/solid red line on the map.

Main map scale is 1:40,000 when printed at A1 (native page size)
Inset and key maps will vary.



WGS 1984 UTM Zone 30N Transverse Mercator

Rampion Extension Development Limited

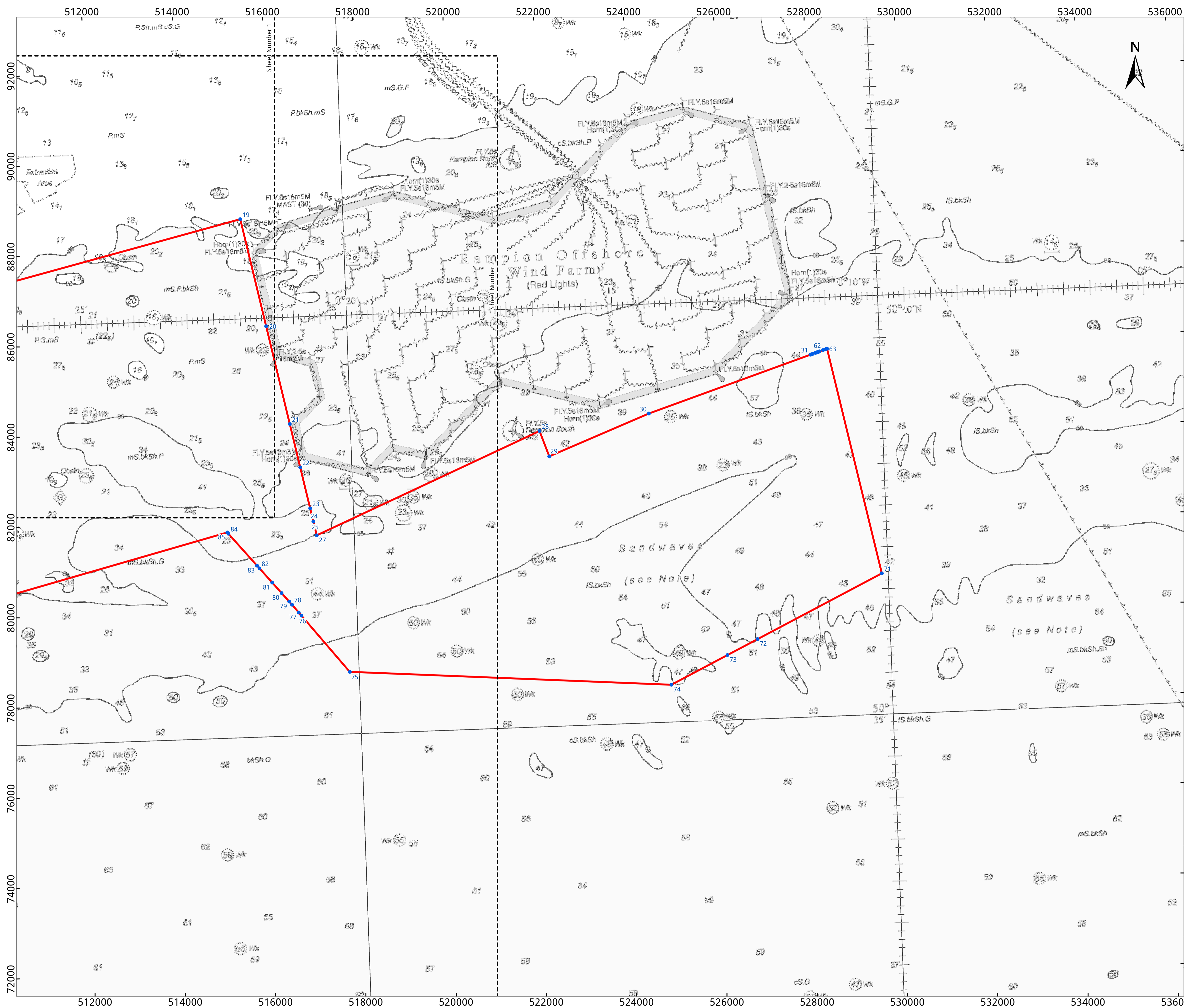


Rampion 2 Offshore Wind Farm
Offshore Order Limits and Grid Co-ordinates Plan
Sheet 2 of 3

APFP Regulations: Regulation 5(2)(i)
Application Document Reference: 2.11

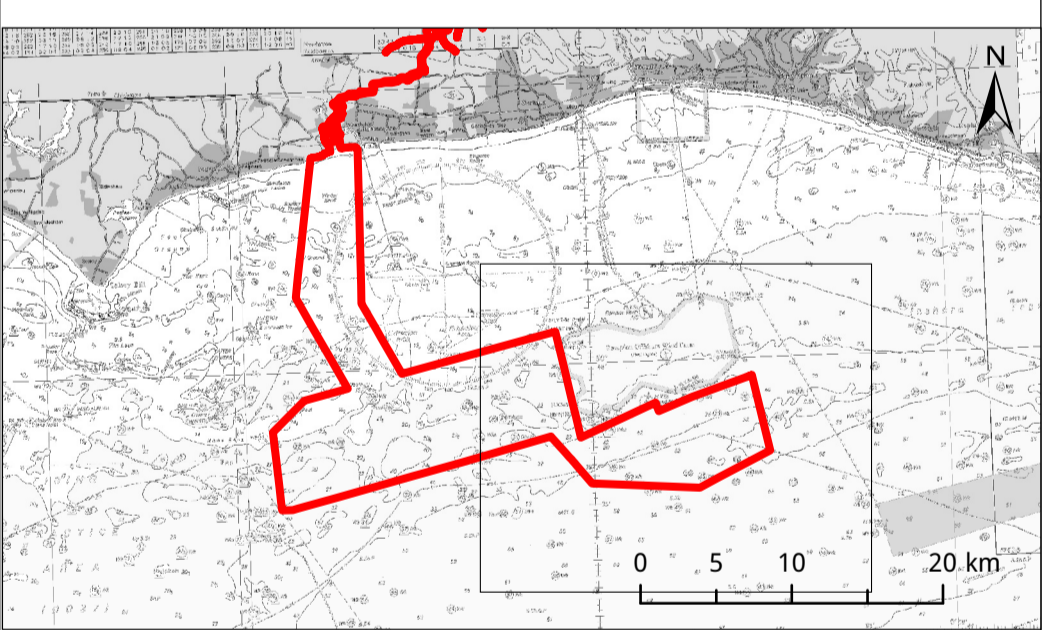
System Identifier: 004891763-01-RA2-DCO Offshore Order Limits	Version: 01
--	----------------

Company: RWE	Drawn By: LB	Chk/Aprvd: MM	Drawn Date: 03/08/2023	Status: FOR USE
-----------------	-----------------	------------------	---------------------------	--------------------



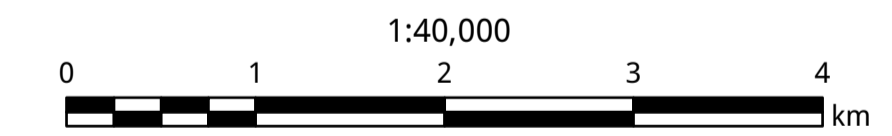
- Key**
- Development Consent Order Limits
 - Coordinates provided in DCO for Offshore Order Limits

NOTES:
Offshore DOC Order Limits Coordinates are provided seaward from Mean High Water Springs



Due to scaling, some narrow areas (i.e. existing tracks) within the red line boundary may appear as a single/solid red line on the map.

Main map scale is 1:40,000 when printed at A1 (native page size)
Inset and key maps will vary.



WGS 1984 UTM Zone 30N Transverse Mercator

Rampion Extension Development Limited



Rampion 2 Offshore Wind Farm
Offshore Order Limits and Grid Co-ordinates Plan
Sheet 3 of 3

APFP Regulations: Regulation 5(2)(i)
Application Document Reference: 2.11

System Identifier: 004891763-01-RA2-DCO Offshore Order Limits	Version: 01
--	----------------

Company: RWE	Drawn By: LB	Chk/Aprvd: MM	Drawn Date: 03/08/2023	Status: FOR USE
-----------------	-----------------	------------------	---------------------------	--------------------